

# Community Partnerships and Resources

---

Presenter:

Kristina Casterline,  
FFPSA Consultant



THE UNIVERSITY OF  
TENNESSEE  
KNOXVILLE

---

SOCIAL WORK OFFICE OF  
RESEARCH & PUBLIC SERVICE

## The Principles of Trauma-Informed Practice

### **Safety**

Staff and all those served experience physical and psychological safety

### **Trustworthiness & Transparency**

Decisions are made with transparency, cultivating an ethos of trust

### **Peer Support**

Stories and experiences are shared to facilitate recovery

### **Collaboration & Mutuality**

Power differences are levelled, and decisions are shared between all involved

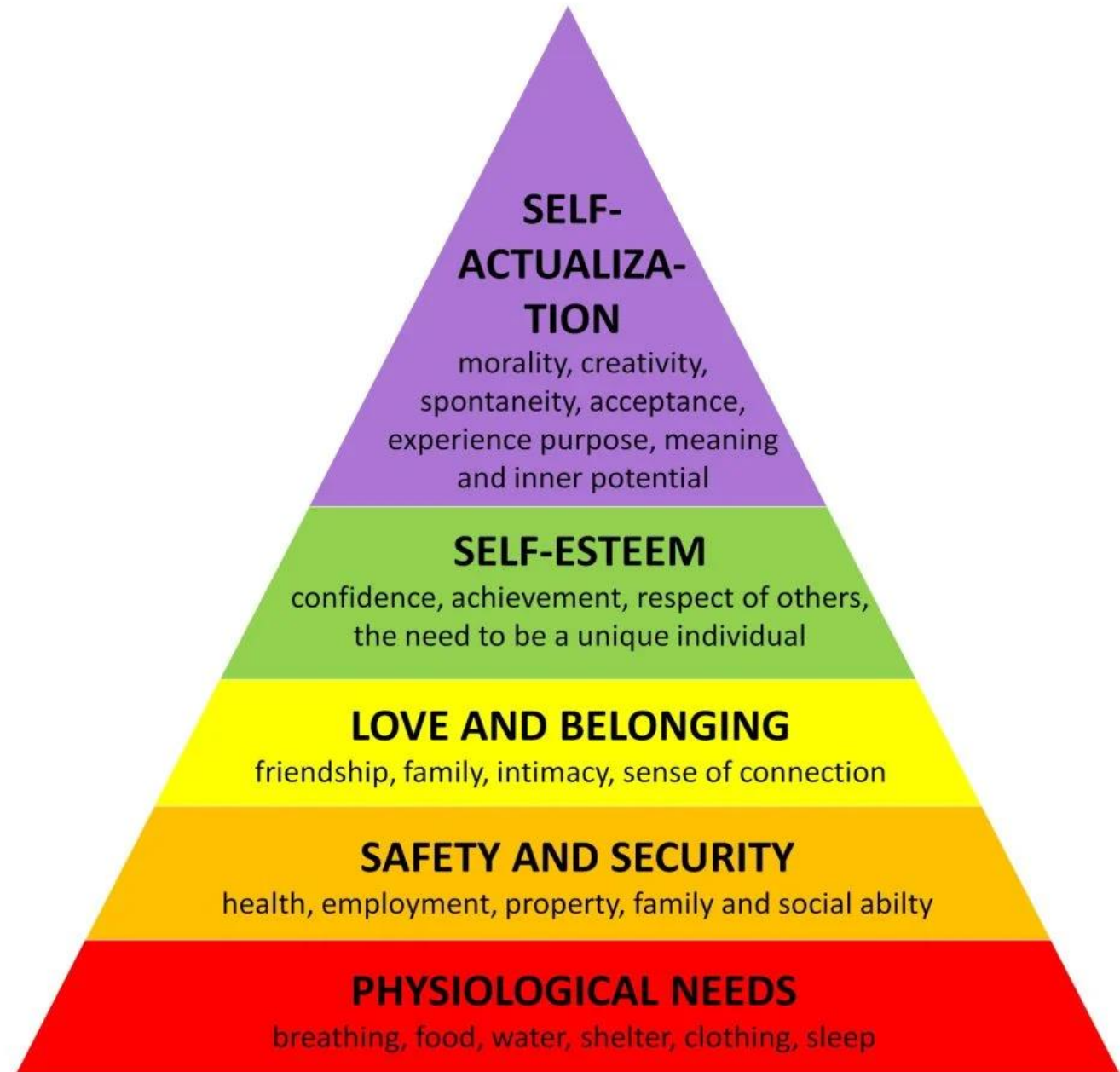
### **Empowerment, Voice & Choice**

Positive attributes and experiences are built upon, choice is offered, target setting practised, and self-advocacy promoted

### **Respect for Diversity**

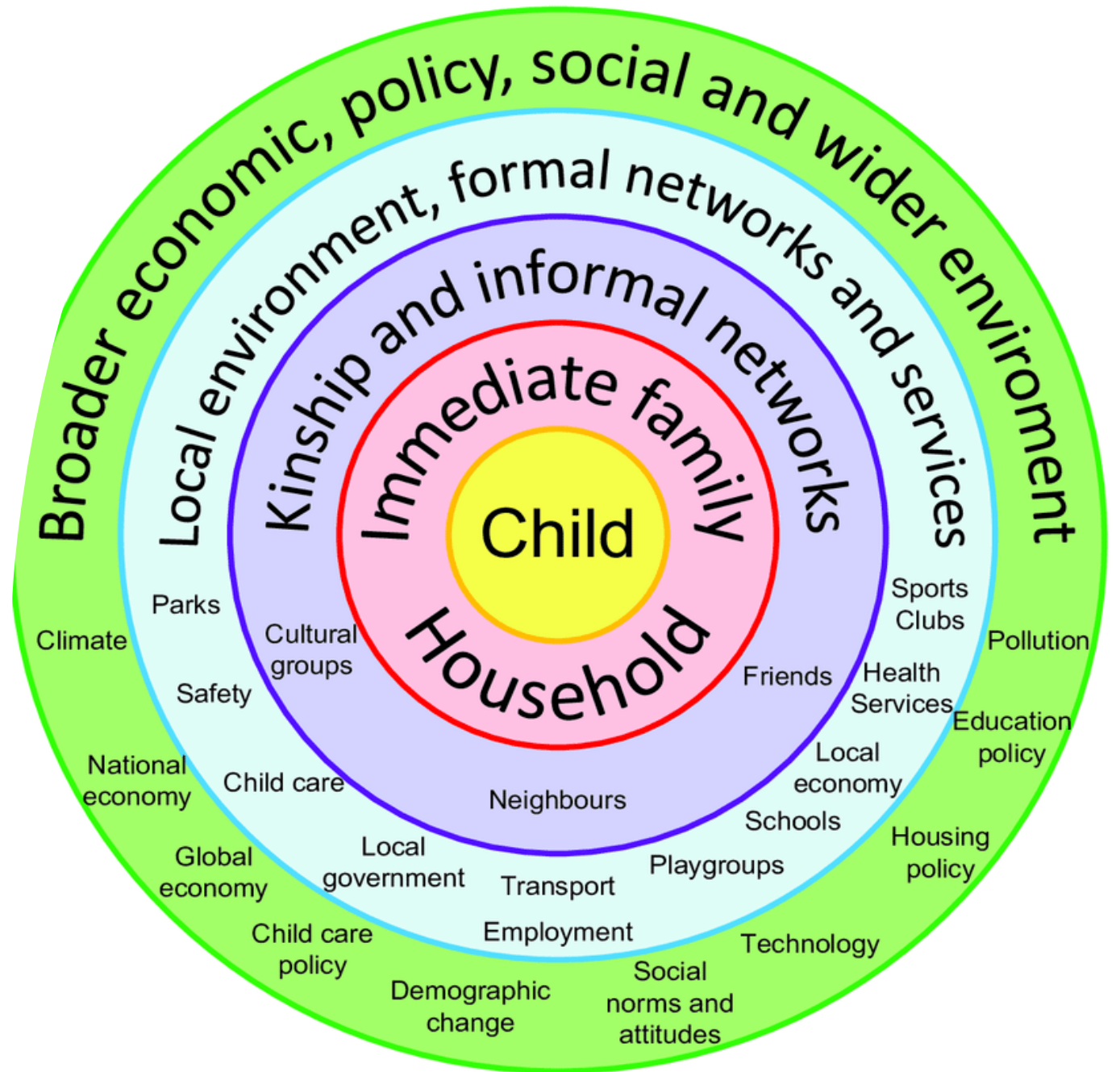
Stereotypes are overcome to recognise individual needs

# Maslow's Hierarchy of Human Needs



# Ecological Model

---

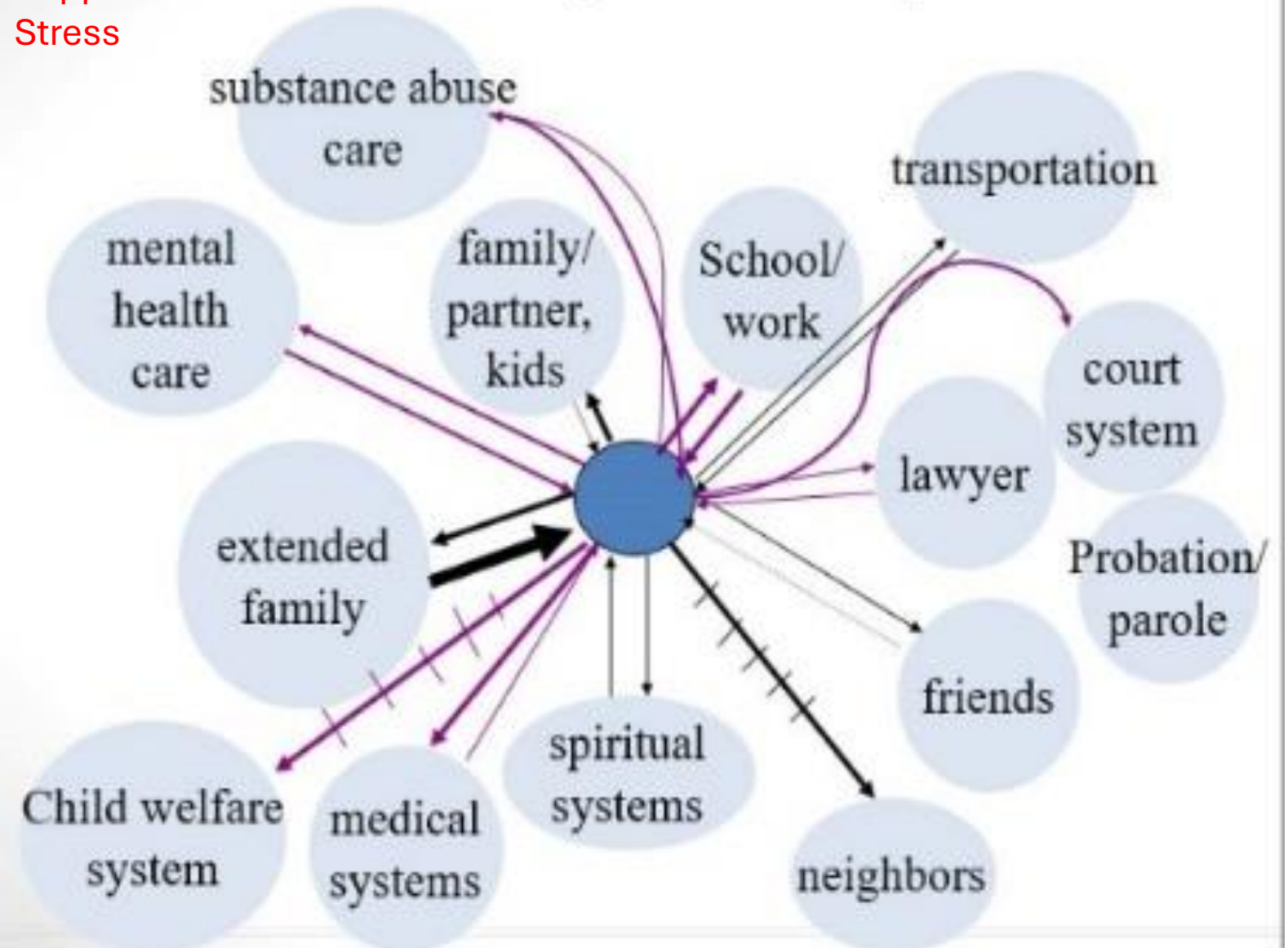




# Ecomaps

Relationships  
Support  
Stress

## Family Eco-Map



### Key:

Close and strong relationship



Less close or occasional relationship



Difficult or stressful relationship



Equal relationship

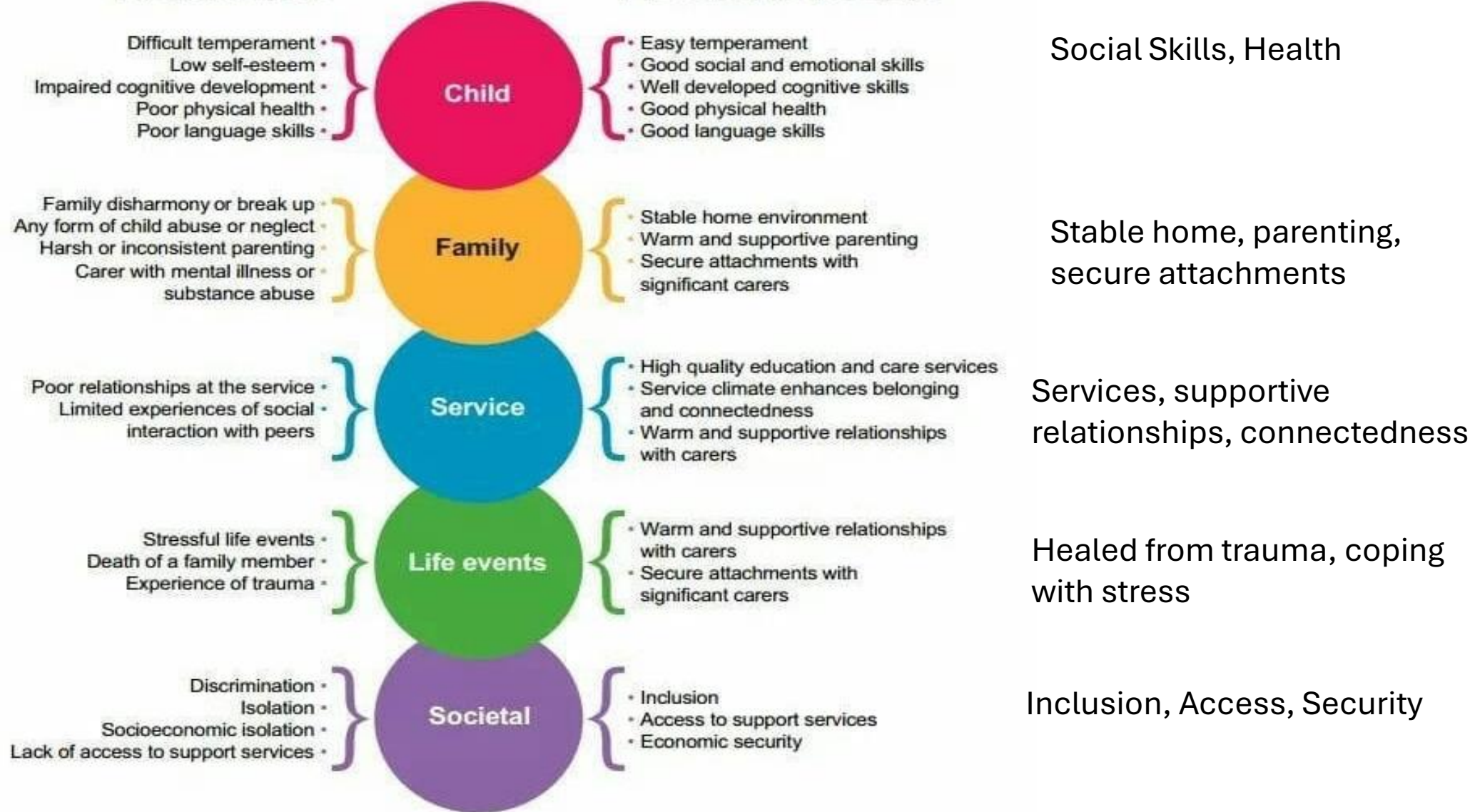


One-way relationship



## Risk factors

## Protective factors



# Community Needs Assessment

Identify the community's strengths and resources.

Learn about issues that are important to the community members you will be working with.

Check to see if partnerships already exist. What is the current structure for addressing the issue?

Recognizing past problems and identifying strategies to overcome challenges or barriers.

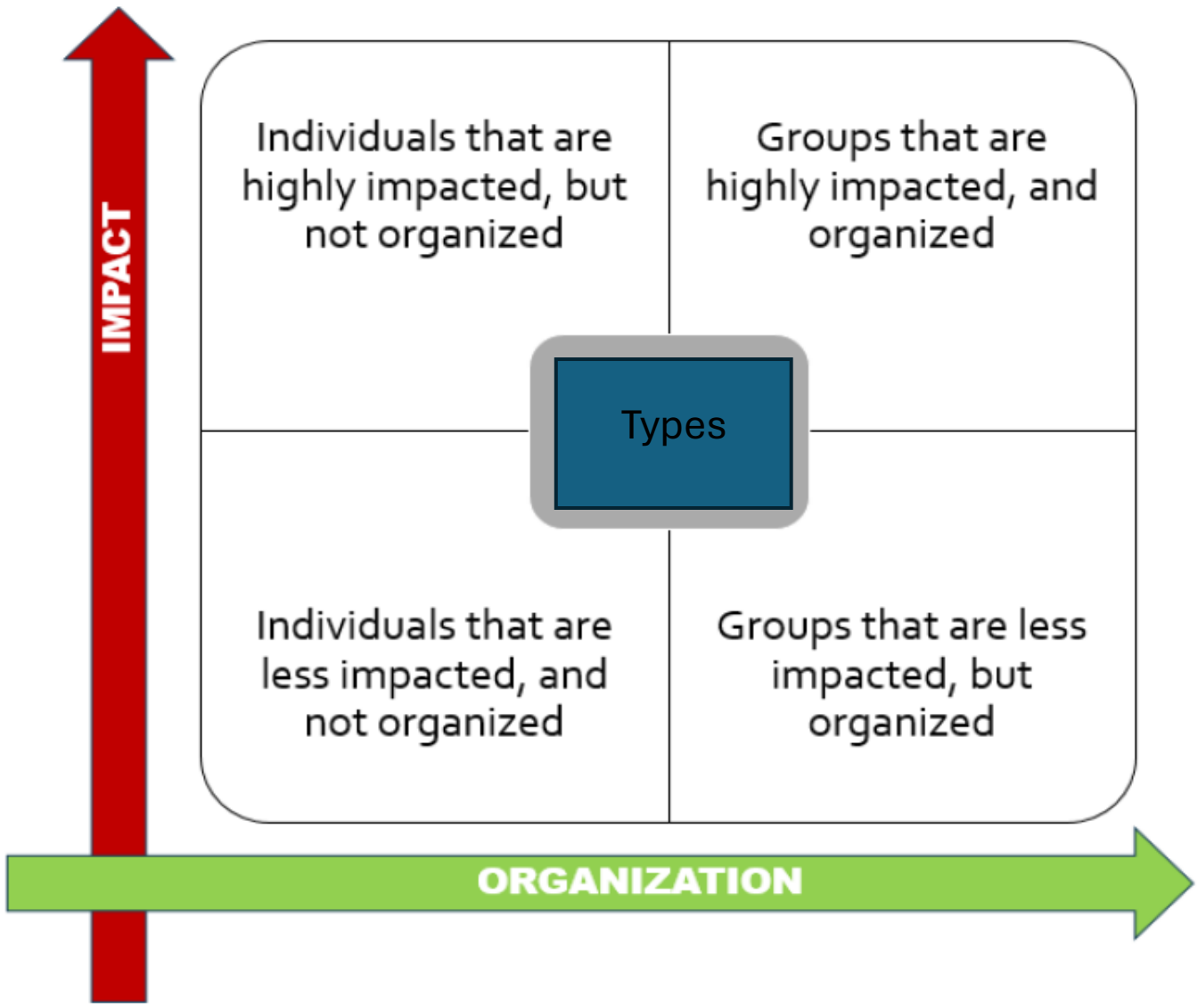
Realize though that you cannot determine the community's true priorities without obtaining the community's perspective.

# Crosswalk Services

Agency	Services Provided	Eligibility	Cost/Insurance
Catholic Charities			
Hope Clinic			
Mending Hearts			
Nurses for Newborns			
Porter-Leath			
Portico			
Ridgeview			



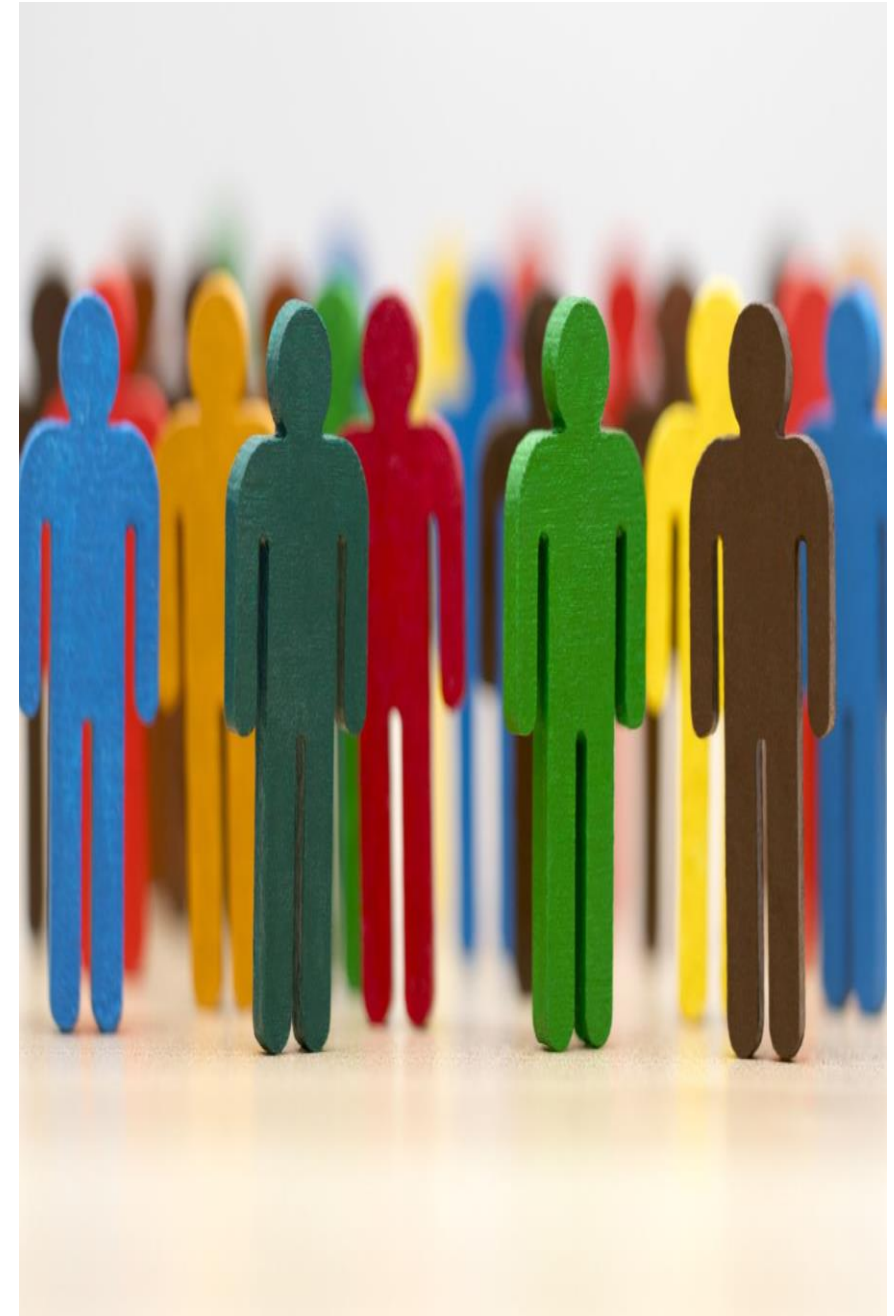
# Contributor Types



---

# Relationship Building

- A key part of relationship-building is to create a shared vision, mission, goals, and objectives.
- In order to build communities that are powerful enough to attain significant change, we need large numbers of people working together.
- Each community has unique strengths and perspectives. Understanding cultures will help us overcome and prevent racial and ethnic divisions.
- People from different cultures have to be included in decision-making processes in order for programs or policies to be effective.
- An appreciation of cultural diversity goes hand-in-hand with a just and equitable society.



# Culture and Language

Culture affects the social organization and leadership structure of groups.

When meeting with ethnic and cultural group leaders:

- Discuss group members culture and heritage
- Gather information on the cultural groups in your community
- Learn how different groups interact with institutions
- Build on existing cultural traditions in a group



# Inviting Others to the Table

- Create a warm and friendly environment.
- Provide clear information about group goals, objectives and action steps.
- Provide meaningful opportunities to engage.
- Connect with one another and build trust.
- Establish clear communication.
- Plan events to build strong personal ties between members.
- Involve members in the planning and implementation.





# Communication Strategies

## Before the meeting:

- Gather background information on the issue to be discussed.
- Learn about the person and his/her organization.
- Write a list of questions to ask.
- Familiarize yourself with other individuals and organizations addressing the same issue.

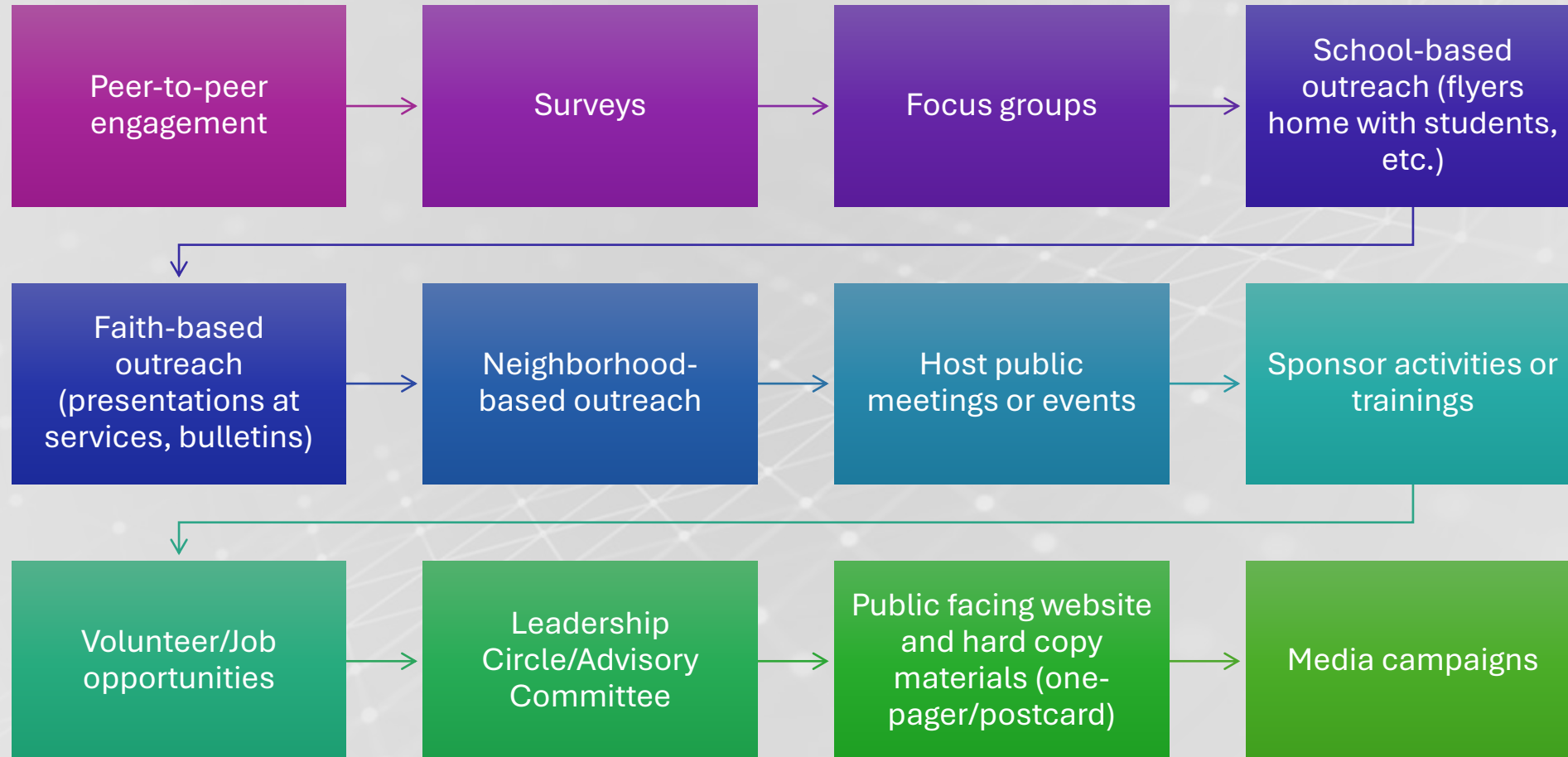
## During the meeting:

- Introduce yourself and your organization.
- Explain the purpose of the meeting.
- Give the name of the person who referred you to that person. This can help build trust and credibility.
- Explain the project.
- Ask who are the key people of interest in the community and who has worked on this problem before?
- What are the resources that each person or group can bring to the project?
- Ask if they are willing to partner and how they can contribute?
- Create a plan for how it will be implemented/monitored/tracked.





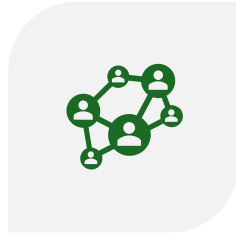
# Engage, Educate and Collaborate



# Benefits of Partnership



ENSURES GREATER SUCCESS BY INVOLVING PEOPLE MOST AFFECTED BY THE PROBLEM.



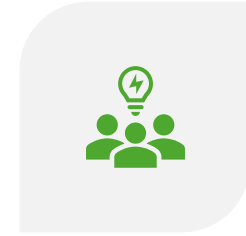
CREATES A COLLABORATIVE ENVIRONMENT FOR NETWORKING WITH NEW PARTNERS.



UNDERSTANDING OF MEMBERS' STRENGTHS, ASSETS AND LIMITATIONS.



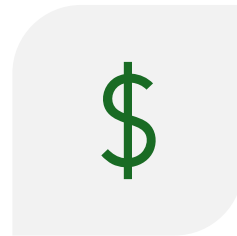
PROVIDES CREDIBILITY IN WORKING WITH OTHER PARTNERS.



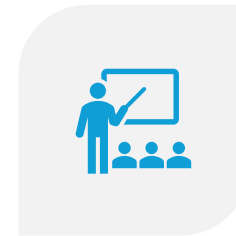
SHARING OF RESOURCES AND CREATIVE IDEAS TO DEVELOP PROGRAMS



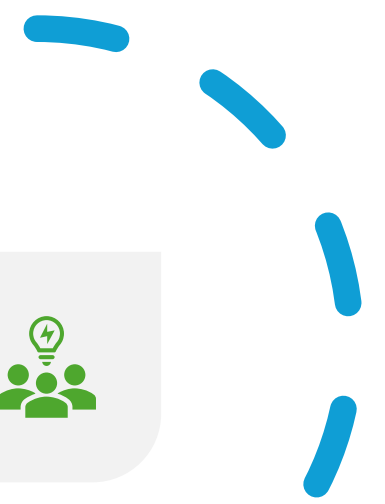
REDUCES THE AMOUNT OF COMPETING AND FRAGMENTED SERVICES.



INCREASES FINANCIAL AND OTHER RESOURCES



BUILDS COMMUNITY CAPACITY THROUGH TRAINING AND PROFESSIONAL DEVELOPMENT.





# Resources

Welcome Baby is the TN Department of Health's universal outreach program.

It was designed for families with newborns to connect them with helpful services in the community.

<https://www.tn.gov/health/health-program-areas/fhw.html>



# Resources

- Tennesseans for Quality Early Education (TQEE)
  - <https://tqee.org/measure-success/supports-for-families/>
- Coalition includes leaders from a diverse array of industry sectors, locally elected and appointed officials, and many parents and grandparents, educators and caregivers
- Early education, birth through 3rd grade, is the key to academic achievement, workforce success and economic prosperity
- Focused on early learning, development, supportive factors





JOB

# Resources

## Virtual Job Center Services:

- Job Planning
- Education
- Skill Sharpening
- Work Life support
- Youth services

<https://tnvirtualajc.com/>

<https://tnvirtualajc.com/programs-list>



# Resources

---

## **Free Services offered by Tennessee Adult Education and American Job Centers:**

- Basic Education for Adults (ABE)- Improve math, writing, and reading skills
- Preparation for the High School Equivalency Diploma
- Integrated English Literacy and Civic Education (IELCE)- Learn to read and communicate in English, improve your math and employability skills, and prepare for US citizenship
- Digital literacy
- Develop professional, interpersonal, and 21st-century social skills
- Explore college and career options and apply for financial aid
- <https://www.tn.gov/workforce/jobs-and-education/ae.html>



# Resources

---

The Tennessee Housing Development Agency (THDA) provides:

- fixed rate mortgage loans for first-time homebuyers,
- promotes the production of new affordable housing units for households of very low- to moderate-income,
- promotes the preservation and rehabilitation of existing housing
- provides grants to preserve and create homes, offering rental assistance
- assists in the creation and maintenance of rental housing,
- provides educational opportunities
- <https://thda.org/programs>





---

## Resources

- [Kids Central TN](#) – Resource database for families and caregivers to learn about popular parenting topics, track important child milestones, and access vital resources
- [Tennessee Child Care Resources and Referral](#)- Resources for families of young children
- [Children’s Mental Health](#)- Mental health services and supports for young people and their families





# Resources

- [Community Health Access and Navigation in Tennessee \(CHANT\)](#) – Care coordination of medical and social service needs for families through local health departments.
- [Tennessee Voices](#)- Statewide mental health support, referrals, and advocacy for families
- [Community Advisory Boards \(CABS\)](#) Each local advisory board recommends ways to bring together DCS, families, and available resource providers within the community and works to develop formal and informal services resources families may need





# Community Toolbox

---

- Best practices
- Challenges and solutions
- Toolkits
- Models
- Community Development
- Strategic Planning
- Cultural Competence
- Advocacy
- Outcomes
- Leadership
- Financial Resources
- Social Marketing
- <https://ctb.ku.edu/en>
- Center for Community Health and Development at the University of Kansas



# Success Stories



What positive outcomes did you want to achieve?



How did you gain and sustain partnerships and programs?



How did you plan for the future by developing long-term goals and outcomes?



Questions ?

Comments/ Reflections

Please complete our  
training evaluation!



Thank you!

Contact:

Kristina Casterline / [kriscas@utk.edu](mailto:kriscas@utk.edu)

Strong Families: [Strongfamilies@utk.edu](mailto:Strongfamilies@utk.edu) / (844) 887-9677

